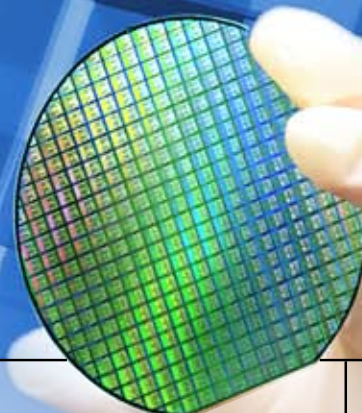


Silicon Schottky Barrier Wafer

Schottky Wafer for Solar Application

Features

- High forward surge current capability
- ESD protection
- High efficiency, high frequency operation
- Low forward voltage drop
- Low reverse leakage current



Series	Avg. Forward Current	Max. Reverse Voltage	Forward Voltage			Reverse Current
	$I_{F(AV)}$ (A)	V_{RRM} (V)	$V_{F typ}$ (V)	$V_{F max}$ (V)	@ I_F (A)	$I_{R max}$ (μA)
LBW03	3	20	0.43	0.50	3	100
	3	30	0.44	0.50	3	100
	3	40	0.45	0.50	3	100
	3	60	0.60	0.65	3	100
	3	100	0.75	0.80	3	50
LBW05	5	20	0.43	0.50	5	100
	5	30	0.44	0.50	5	100
	5	40	0.45	0.50	5	100
	5	60	0.60	0.65	5	100
	5	100	0.75	0.80	5	50
	5	150	0.82	0.86	5	50
LBW08	8	30	0.49	0.55	8	150
	8	40	0.50	0.55	8	150
LBW10	10	20	0.48	0.55	10	300
	10	30	0.49	0.55	10	300
	10	40	0.50	0.55	10	500
	10	45	0.52	0.55	10	300
	10	60	0.62	0.65	10	300
	10	100	0.77	0.82	10	50
LBW15	15	45	0.52	0.55	15	300
	15	60	0.62	0.65	15	300
	15	100	0.77	0.82	15	50
	15	150	0.82	0.86	15	50
LBW20	20	40	0.50	0.55	20	300
	20	45	0.52	0.55	20	300
	20	60	0.62	0.65	20	200
	20	100	0.77	0.82	20	50
	20	150	0.82	0.86	20	50